

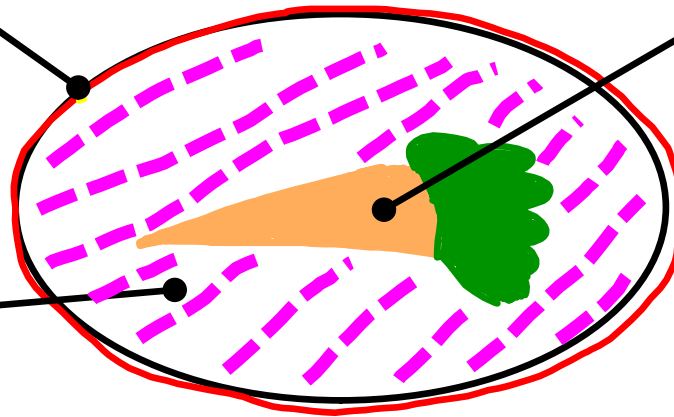
Seed Anatomy

Seed Coat:

Outer layer that
protects the seed
Not the shell

Stored Food:

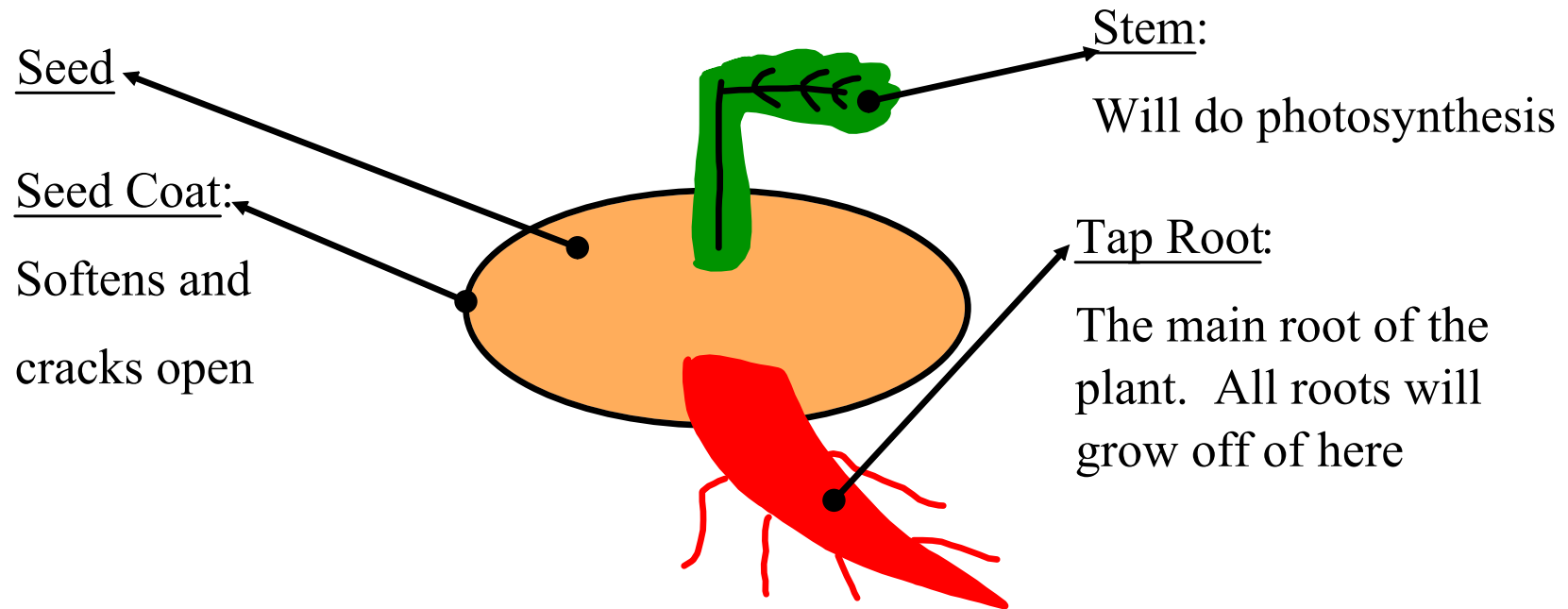
Gives the seed energy
once it starts to sprout



Embryo:

Part of the seed
that will become
the plant

Germination: The sprouting of a seed



Plant Anatomy

Petals:

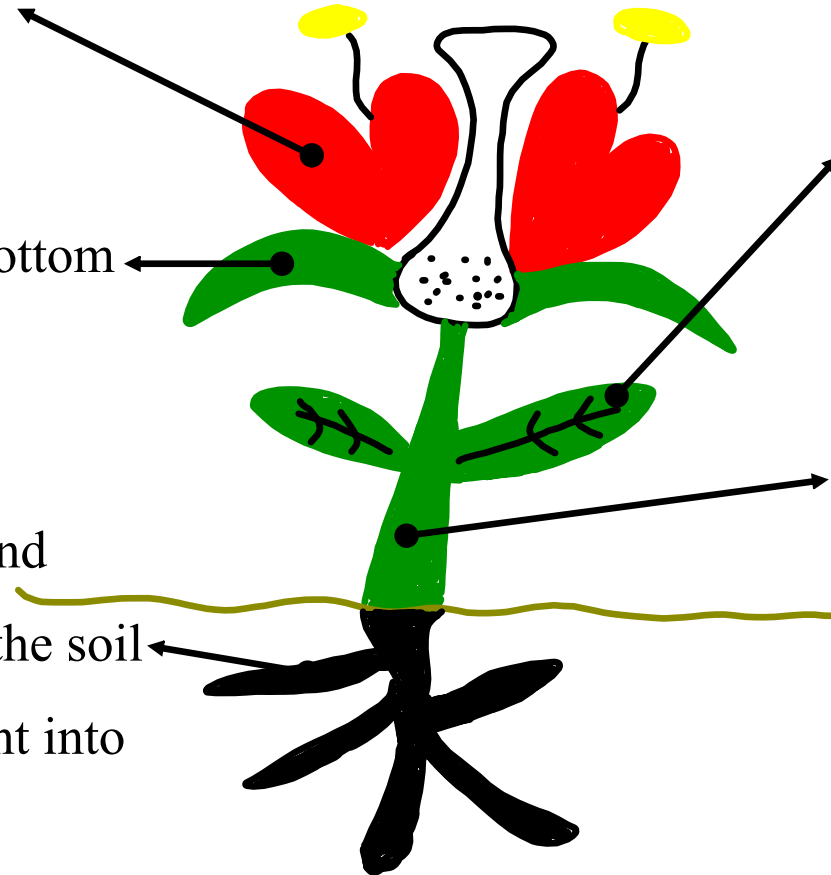
Protect the inside
of the flower

Sepal:

Protects the bottom
of the flower

Roots:

Collect water and
nutrients from the soil
Anchor the plant into
the soil



Leaf:

Uses sunlight to make
food - photosynthesis

Stem:

Holds the plant upright
Gets water from the
roots to the plant